

grapes.msu.edu

[Home](#)[About Us](#)[Search](#)[Newsletters](#)[Weather /
Climate](#)[Viticulture](#)[Pest
management](#)[Scouting guide](#)[Publications](#)[Calendar of
events](#)[Industry links](#)[Contacts](#)

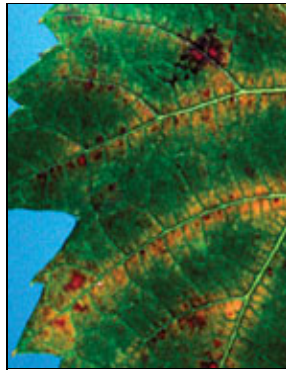
Download [Adobe Acrobat Reader](#) to view pdf files.

Twospotted spider mite

Rufus Isaacs, MSU Entomology

[Home](#) > [Scouting guide](#) > twospotted spider mite

This mite can cause severe damage to wine grapes if populations reach high densities. The mite's feeding removes leaf tissue, causing yellowing and then bronzing. Thin-leaved varieties are most susceptible. These mites overwinter in leaf litter, develop on weeds in spring and move onto the vine as ground cover dries in summer. Water-stressed vines are most at risk. The most effective method of control is to protect predatory mites. **Biological control** is achieved with one predatory mite per 10 twospotted mites.



Bronzing on the upper side of the leaf is a symptom of mites feeding below.

Twospotted spider mites can be seen with a 20X hand lens.

Additional information

- Recommendations from the [Michigan Fruit Management Guide](#)

[Site map](#)[Copyright/Linking](#)

Funding for this web site provided by [Project GREEN](#), [American Farmland Trust](#), [EPA Region 5's Strategic Agricultural Initiative program](#), [The National Foundation for IPM Education](#), the [Center for Agricultural Partnerships](#) and the [MSU Integrated Pest Management Program](#) in collaboration with [MSU Extension](#) and the [Michigan Agricultural Experiment Station](#). Partially support from [NC-IPM Center](#).

05/26/11 Contact: [E. Haney](#)