

The background is a dark blue gradient with a subtle pattern of white dots. Overlaid on this are several circular and semi-circular graphic elements. On the left side, there is a large, semi-transparent scale or gauge with numerical markings from 140 to 260 in increments of 10. The numbers are arranged in a circular path. Several circular arrows, some solid and some dashed, are scattered across the page, pointing in various directions. The overall aesthetic is technical and modern.

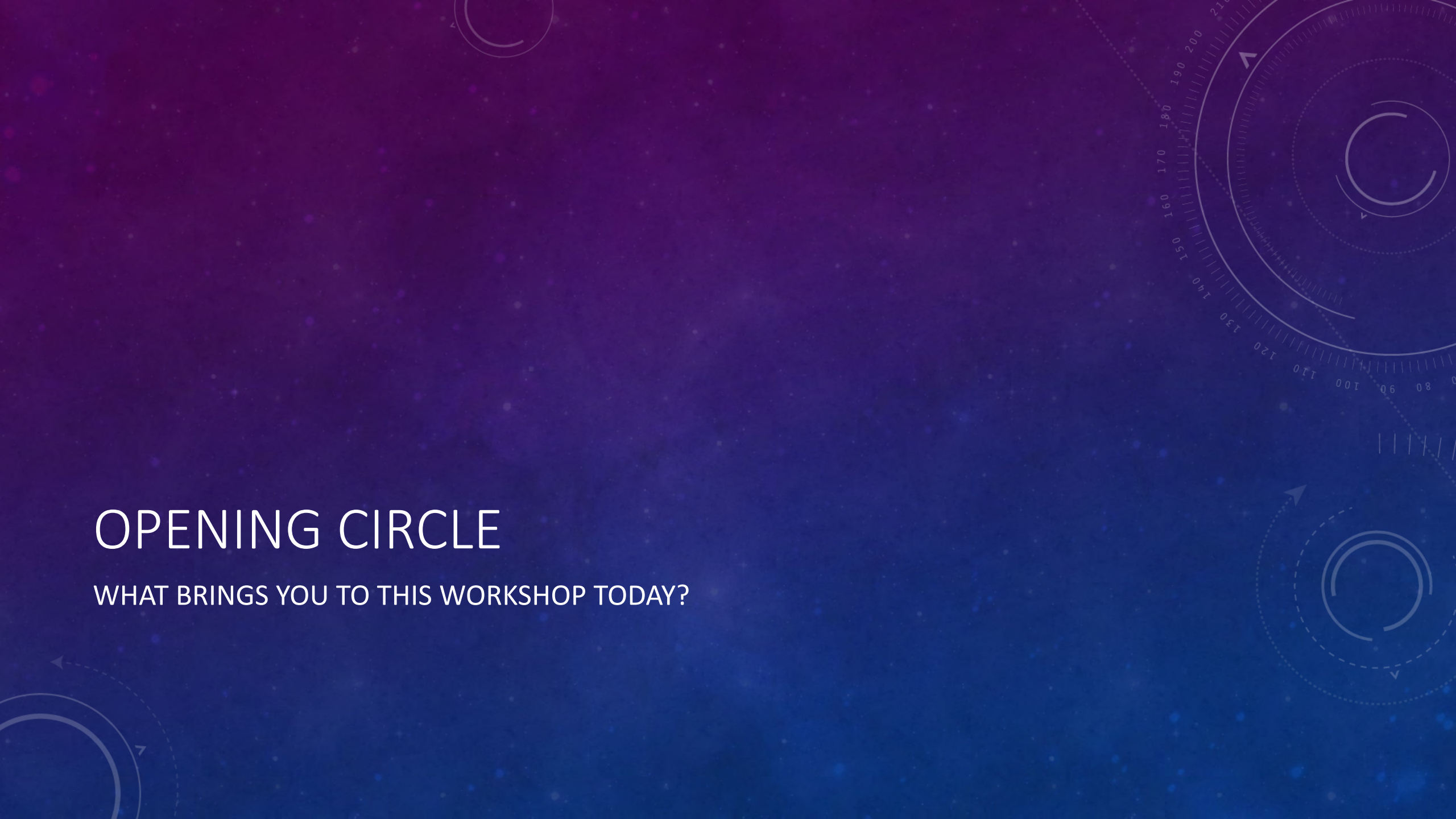
# DEVELOPING & BUILDING ORGANIZATIONAL CAPACITY FOR YOUTH INVOLVEMENT

ANITA SINGH, ANGELA ABIODUN

SARAH SCARBOROUGH, DAIMANIQUE STINSON, SA'NAYA DAVIS-JONES &  
DORIAWN ROGERS

# OPENING CIRCLE


WHAT BRINGS YOU TO THIS WORKSHOP TODAY?



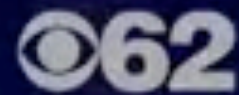
The background features a blue gradient with a starry pattern. On the right side, there are several technical diagrams, including a large circular gauge with numerical markings (100, 110, 120, 130, 140, 150, 160, 170, 180, 190, 200, 210) and arrows, and other smaller circular elements with arrows and dashed lines.

ICEBREAKER



A male news anchor, Tom Jordan, is shown from the chest up, wearing a dark suit, light blue shirt, and a patterned tie. He is standing in a news studio with multiple monitors in the background. The monitors display various news-related graphics, including a clock, a grid of small video feeds, and the text "662 EYE-DETROIT". A large, stylized blue circular graphic is on the left side of the frame. At the bottom, there is a white banner with the anchor's name and title, and a blue banner with the CBS 62 logo.

**TOM JORDAN**  
Morning Anchor, WWJ Newsradio 950





# YOUTH ENGAGEMENT STRATEGIES

- Opening/Closing Circles
- Set guidelines, norms & goals
- Jobs
- Meal/Event Creation - Cook offs
- Product Creation







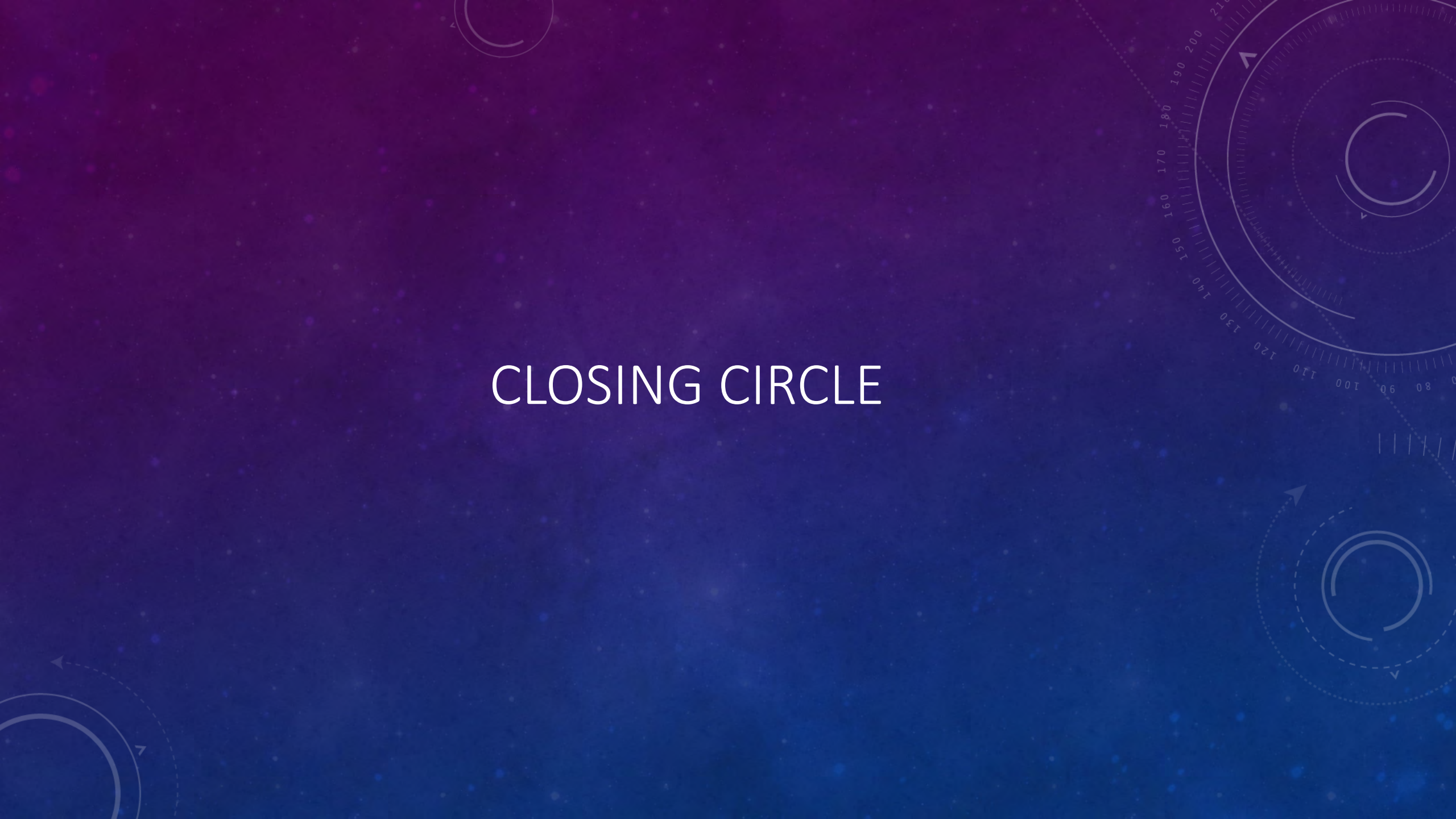
# YOUTH ENGAGEMENT STRATEGIES

- Youth Crop Circles
- Restorative Practices
- Leadership Development
- End of Season Awards
- Pre & Post Surveys



QUESTIONS?

# CLOSING CIRCLE



# FOLLOW UP

- Anita Singh

[keepgrowinganita@gmail.com](mailto:keepgrowinganita@gmail.com)

website: <http://detroitagriculture.net/>

- Angela Abiodun

[angela@detroitfoodacademy.com](mailto:angela@detroitfoodacademy.com)

website: <http://www.detroitfoodacademy.com/>