

Back to IPM scouting in woody landscape plants.

Gall-producing mites

Eriophyidae

Mites in this family are responsible for producing galls and dense patches of hair or beadlike growth called erineum on a number of plants. Several commonly seen galls are: maple spindle gall, maple bladder gall, and erineum on maple.

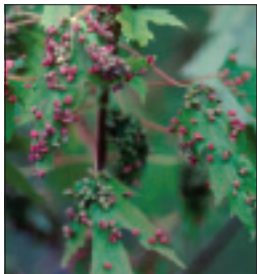


The size of the mites is less than 0.5 mm.

Management: Treatment is not usually necessary, as lasting harm to plants rarely occurs.



Maple spindle gall on sugar maple.



Above left: Maple bladder gall on silver maple. Above right: Erineum patches on undersides of silver maple leaves.