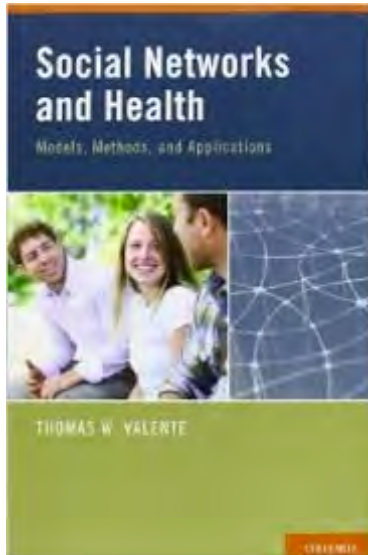




Life in Networks

Curtis Ogden



NEW REPUBLIC [SUBSCRIBE NOW FOR \\$34.97](#) [OUR LATEST](#) [MUST-READS](#) [CURRENT ISSUE](#)

SCIENCE MAY 13, 2013

The Lethality of Loneliness

We now know how it can ravage our body and brain

BY JUDITH SHRELEVITZ

Sometime in the late '50s, Frieda Fromm-Reichmann sat down to write an essay about a subject that had been mostly overlooked by other psychoanalysts up to that point. Even Freud had only touched on it in passing. She was not sure, she

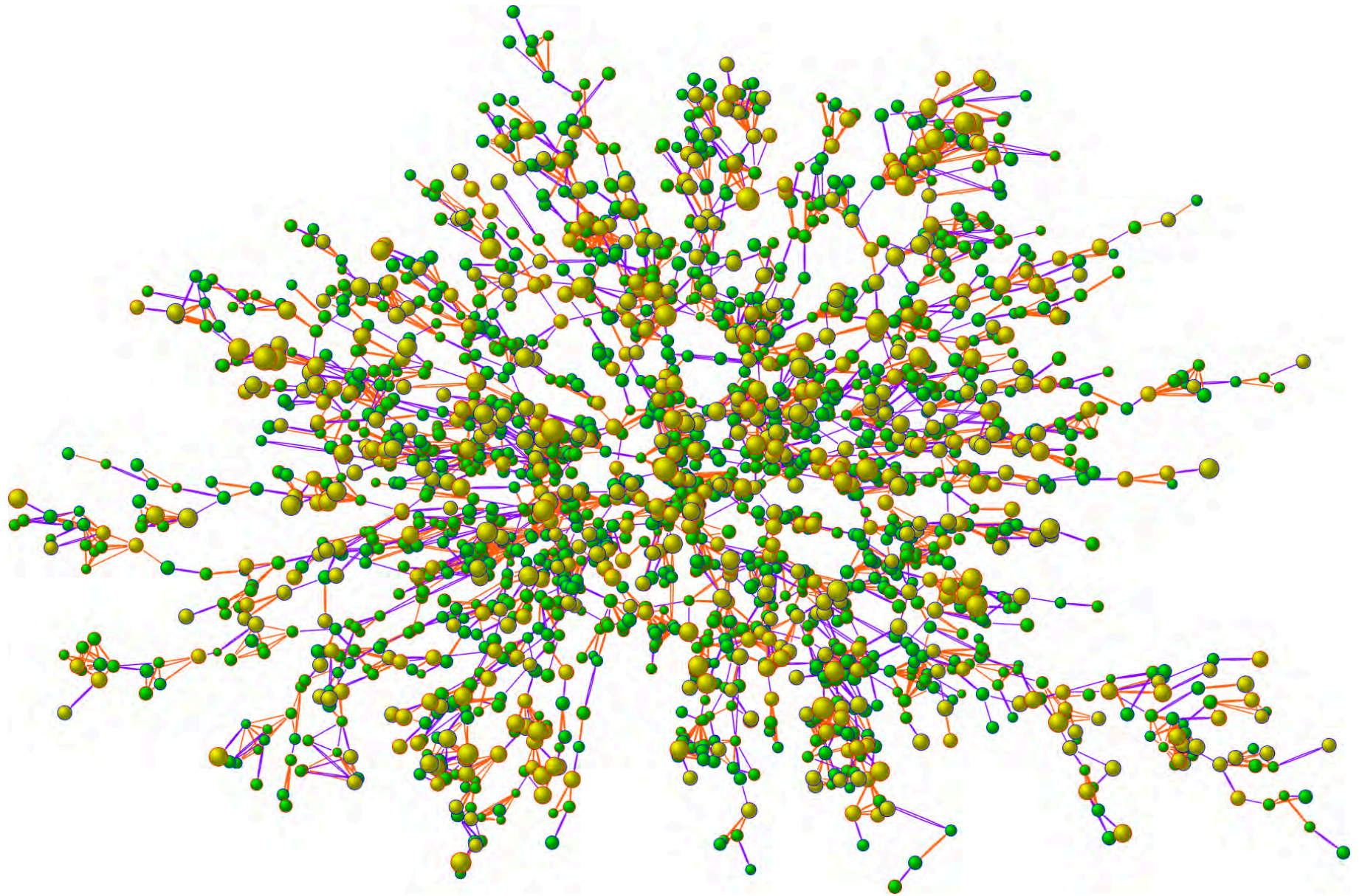
PHOTO BY [Carmen Brown](#)

The article preview is set against a background image of a house silhouette against a sunset sky over a field.

*“In this exquisitely
connected world, it's
never a question of
'critical mass.'
It's always about
critical connections.”*

- Grace Lee Boggs



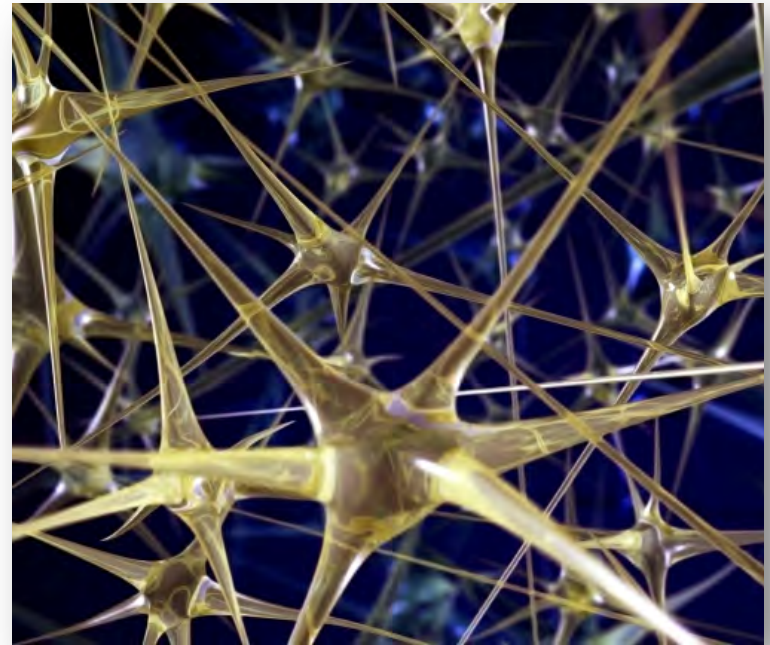


“Long-term prosperity is primarily a function of healthy [diverse, intricate, robust] human webs.”

- Dr. Sally J. Goerner, Science Advisor, Capital Institute

What Are Networks?

- Networks are sets of “nodes and links,” of elements that are connected to each other.
- People and organizations link to achieve *collective* goals; i.e., produce net gains





Adaptive Capacity



Small World Reach



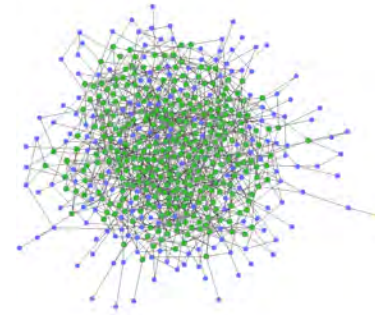
Rapid Dissemination



Resilience



Network Value



- Being with people who inspire and support me
- Learning about topics relevant to my work
- Getting updates on and fuller picture of the changing environment that shapes my work
- New tools, skills and tactics to support my work (policy analysis and research, communications, outreach and engagement, fundraising, management)
- Being affiliated with something that has prestige/recognition
- Amplification of voice and efforts
- Access to funding and other resources
- New partnerships/joint projects and activities



Coordinated Action

*Advocacy, prototyped
project, common
support venture,
fundraising, etc.*

Alignment

Align around context, current
reality, systems analysis, goals
Achieve conceptual
congruence shared terms
Create and promote shared
values vision

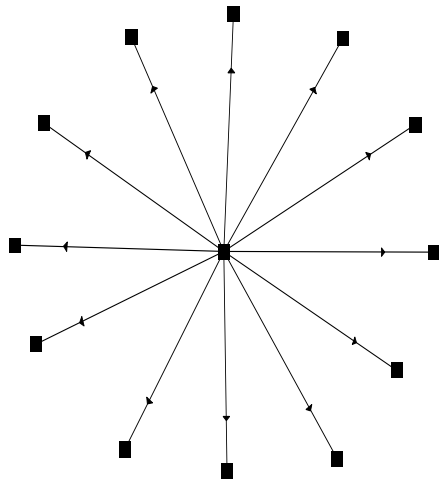
Connectivity

Build stronger connections and trust
Share knowledge, create new knowledge
systems and resource channels together
Develop understanding of the state of the
systems

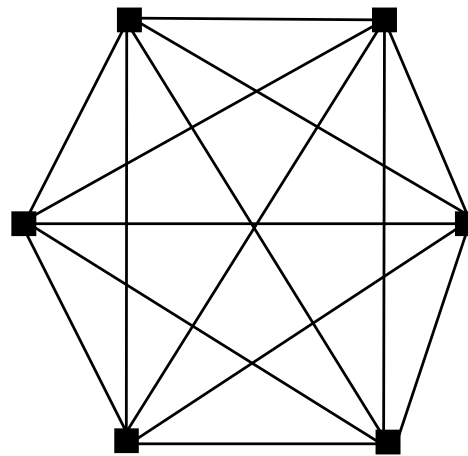


Interaction Institute
for Social Change

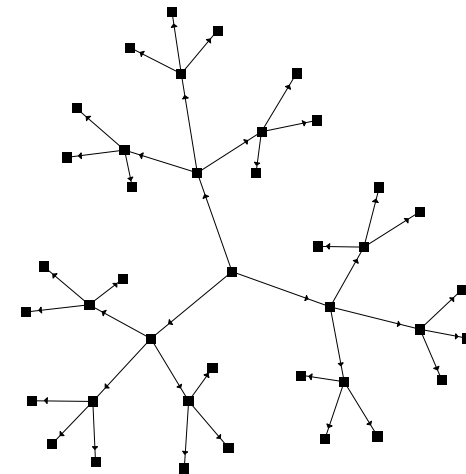
Structure Matters



Centralized/Hub-and-Spoke



Dense Cluster/Mesh



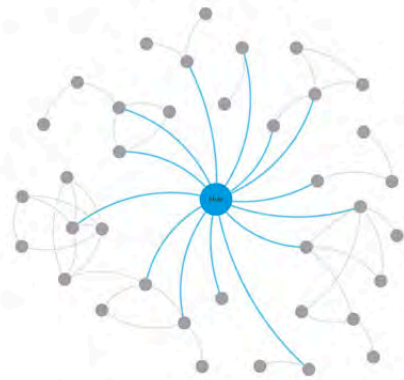
Distributed/Multi-Tier

Network Evolution

1. Scattered fragments



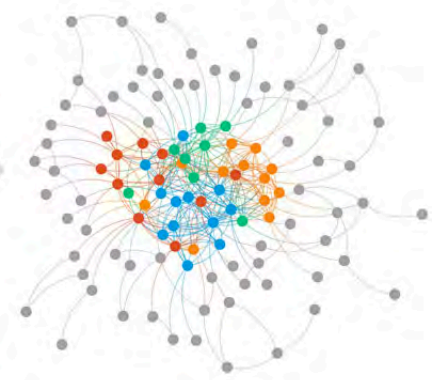
2. Hub and spoke



3. Multi-hub



4. Core/periphery



ORAL HEALTH FOR ALL 2020

TARGET

The 10 largest school districts have incorporated oral health into their systems

TARGET

At least 30 states have an extensive Medicaid adult dental benefit

ORAL HEALTH ACROSS THE LIFESPAN

GOAL
Eradicate dental disease in children

GOAL
Incorporate oral health into the primary education system

GOAL
Include an adult dental benefit in publicly funded health coverage

**Oral health is essential to lifelong health and wellbeing.
Improved health equity results in greater social justice**

GOAL
Integrate oral health into person-centered healthcare

GOAL
Improve the public perception of the value of oral health to overall health.

GOAL
Build a comprehensive national oral health measurement system

ORAL HEALTH AS PART OF OVERALL HEALTH

TARGET

Oral health is increasingly included in health dialogue and public policy.

TARGET

Medicare includes an extensive dental benefit

TARGET

With the closing of disparity gaps, 85% of children reach age 5 without a cavity

TARGET

Oral health is integrated into at least 50% of emerging person-centered care models

TARGET

A national and state-based oral health measurement system is in place

Evolution of the OH2020 Network Strategy

- This graphic shows the DentaQuest Foundation’s vision to gradually build an interconnected OH2020 network with a stronger core that shares knowledge and resources, as well as engages new members.
- The Foundation’s vision is to ultimately achieve an independent and sustainable network infrastructure in 2020.



Network Successes: Policy Change

Survey participants were also asked to share a time in the past year that they had success working with other network members on oral health actions. Many participants shared stories of policy change successes.

“In 2015, our oral health coalition brought forth a bill which would provide funding for the state sealant program. We requested resources and information from the network and Basecamp and were able to share this information with many of our legislators”.

“We worked with other network members on letter writing campaigns to defeat community water fluoridation rollback attempts, support HR416 and extend CHIP funding. We also signed onto national letters to extend CHIP funding, and support passage of S.192 and the Reauthorization of the Older Americans Act.”

A stylized letter 'U' logo. The letter 'U' is white and is contained within a red rectangular box. This red box is tilted and placed on top of a larger, blue rectangular box that is also tilted.A logo consisting of the letters 'A' and 'M' in red. Each letter is contained within a light green square, which is itself set within a larger red rectangular frame.A logo consisting of the letters 'W', 'I', 'S', and 'E' in white. Each letter is contained within a blue rectangular box, and all four boxes are set within a larger light green rectangular frame.

Working to Institutionalize Sex Education

WISE Impact

WISE is currently active in 10 states and WISE partners have worked with school districts that are home to some 4.5 million students. Since 2009, WISE sites have brought vital resources to school districts by providing training and technical assistance, capacity-building, and financial support. As a result, WISE funded partners report that they have successfully:



Reached over **975,000 students** with new or better sex education

&

Trained over **4,000 teachers** to teach sex education

Provided assistance to over **275 school districts** to advance sex education

&

Contributed to over **120 school districts** across the country achieving their sex education goals





- Significantly **increased school district leaders' support** for sex education
- Significantly **increased school district readiness** to successfully implement sex education

&

- Significantly **reduced barriers to school districts' implementation** of sex education by providing training, instructional materials, data about positive impacts on health and learning outcomes, and support for school leaders.

For 10 minutes discuss the following with someone else at your table:

- 1. What type of network is your network currently (connectivity, alignment, coordinated action) and what is its overall structure (hub-and-spoke, mesh, decentralized)?*
- 2. What value is it creating for participants/the field?*
- 3. What value would you like the network to create and how might you shift the network to create this?*





[Contact](#) | [Sign up for E-news](#)



[WHO WE ARE](#) | [SIX STATES, ONE REGION](#) | [GET INVOLVED](#) | [NEWS & RESOURCES](#) | [A NEW ENGLAND FOOD VISION](#)

Transforming New England's Food System Together

Food Solutions New England (FSNE) is a regional, collaborative network organized to support the emergence and continued viability of a New England food system that is a resilient driver of healthy food for all, racial equity, sustainable farming and fishing, and thriving communities.



Key Roles/Functions

Coordination

Convening

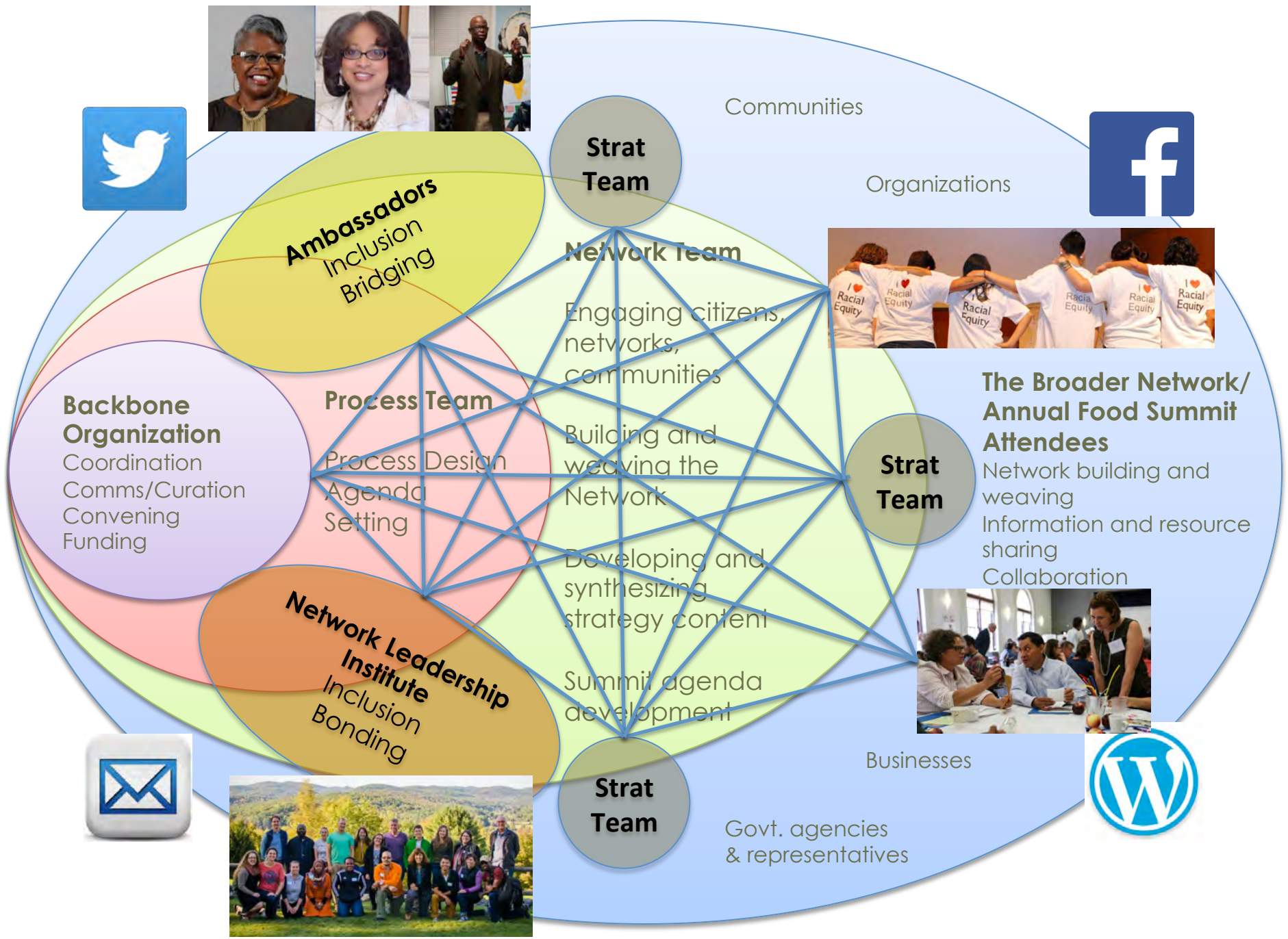
Facilitation

**Network
Leadership**

**Design
(Process, Structure)**

**Weaving
(Bonding, Bridging)**

**Communications
& Curation**



Communities

Organizations

Strat Team

Network Team

Engaging citizens, networks, communities

Building and weaving the Network

Developing and synthesizing strategy content

Summit agenda development

Strat Team

The Broader Network/ Annual Food Summit Attendees

Network building and weaving
Information and resource sharing
Collaboration



Businesses

Govt. agencies & representatives

Strat Team

Ambassadors
Inclusion
Bridging

Process Team

Process Design
Agenda Setting

Network Leadership Institute
Inclusion
Bonding

Backbone Organization

Coordination
Comms/Curation
Convening
Funding





*“A pattern that others
made may prevail in the
world, and following
the wrong god home,
we may miss our star.”*

- William Stafford