



SECTION 3

10 Cents Grantees: A Summary of Geographic Distribution and Children Reached

10 Cents a Meal for Michigan's Kids and Farms (10 Cents), administered by the Michigan Department of Education, matches what participating schools, districts, and early care and education centers spend on Michigan-grown fruits, vegetables, and dry beans with grants of up to 10 cents per meal.

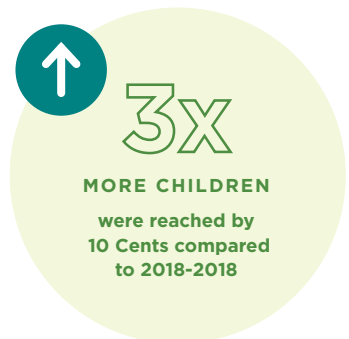
This brief is part of *10 Cents a Meal 2020–2021 Evaluation Results: Expanded Eligibility Increased Impacts*.

The statewide expansion of 10 Cents a Meal for Michigan's Kids and Farms (10 Cents) in 2020–2021 resulted in the **highest number of participating grantees to date (143)**, including school districts and childcare center grantees located throughout Michigan. This allowed the program to reach nearly **450,000 Michigan children**, more than ever before.

Key Takeaways

For K-12 schools, an estimated 438,000 schoolchildren, almost one-third (30%) of all K-12 schoolchildren in Michigan that school year (1,437,612 total),¹ could have benefited from the program. This year's estimated reach is a substantial increase from the 9% of Michigan K-12 schoolchildren reached through the 10 Cents Pilot in 2018–2019 (134,036 K-12 schoolchildren out of 1,507,772 total in the state).²

New to the program this year were 14 early care and education sites (ECEs) that participated in the United States Department of Agriculture Child and Adult Care Food Program, through which more than 11,600 children could have been reached through 10 Cents.³



1 Data provided by the state of Michigan's official public portal for education data, *MI School Data*.

2 Refer to the report, *10 Cents a Meal Pilot: 2018-2019 Evaluation Results, Reflections, and Recommendations*, for more information.

3 Based on ECE license capacity data provided by the MDE.

Tables 3.1 and 3.2 show grant awards by grantee type and the number and demographics, when available, of children reached through 10 Cents grants in the 2020–2021 year.

Table 3.1. Regional Breakdown of 10 Cents Grant Awards for 2020–2021

| MASA Region | School/district grantees | ECE grantees | Counties | Total K 12 children enrollment | ECE license capacity | Total children served |
|--------------|--------------------------|--------------|-----------|--------------------------------|----------------------|-----------------------|
| 1 | 4 | 1 | 4 | 3,214 | 437 | 3,651 |
| 2 | 21 | 2 | 10 | 27,651 | 153 | 26,864 |
| 3 | 27 | 1 | 10 | 75,381 | 60 | 70,282 |
| 4 | 8 | 2 | 6 | 23,305 | 460 | 20,213 |
| 5 | 8 | 2 | 3 | 22,008 | 4,414 | 26,422 |
| 6 | 6 | — | 3 | 20,475 | — | 20,475 |
| 7 | 17 | 2 | 6 | 39,587 | 872 | 40,459 |
| 8 | 10 | — | 5 | 39,054 | — | 39,054 |
| 9, 10 | 28 | 4 | 4 | 187,238 | 5,287 | 188,142 |
| Total | 129 | 14 | 51 | 437,913 | 11,683 | 449,596 |

Note: K–12 schoolchildren enrollment and ECE license capacity data were provided by the MDE. K–12 enrollment data may be undercounted as numbers from some grantees were missing. Schoolchildren data for nonpublic schools and RCCIs are not publicly available, so they are not included. There were no participating ECE sites in MASA Regions 6 or 8, and MASA Regions 9 and 10 were combined.



Table 3.2. Demographics of Michigan Schoolchildren Reached Through 10 Cents Grants for 2020–2021

| | MASA Region | | | | | | | | | Participating grantees | State of Michigan |
|--|-------------|--------|--------|--------|--------|--------|--------|--------|---------|------------------------|-------------------|
| | 1 | 2 | 3 | 4 | 5 | 6 | 7 | 8 | 9, 10 | | |
| Aggregate enrollment | 3,189 | 27,612 | 76,637 | 22,596 | 19,220 | 21,110 | 41,122 | 39,919 | 190,020 | 441,425 | 1,437,612 |
| African American (percent) | 0.72% | 0.85% | 9.52% | 22.34% | 17.22% | 21.71% | 18.26% | 14.88% | 32.86% | 21.52% | 17.72% |
| American Indian/ Alaska Native (percent) | 0.56% | 2.04% | 0.28% | 1.42% | 0.27% | 0.27% | 0.36% | 0.22% | 0.17% | 0.40% | 0.60% |
| Asian American (percent) | 2.04% | 0.78% | 4.29% | 2.06% | 0.41% | 3.54% | 2.11% | 6.92% | 6.16% | 4.61% | 3.53% |
| Hispanic/Latinx (percent) | 2.13% | 3.98% | 14.71% | 8.89% | 4.66% | 14.40% | 12.64% | 9.32% | 6.71% | 9.03% | 8.44% |
| Native Hawaiian/ other Pacific Islander (percent) | 0.06% | 0.13% | 0.07% | 0.31% | 0.08% | 0.05% | 0.08% | 0.05% | 0.09% | 0.10% | 0.09% |
| White (percent) | 89.53% | 88.64% | 66.69% | 60.97% | 72.91% | 50.45% | 58.03% | 59.61% | 51.40% | 59.76% | 64.97% |
| Two or more races (percent) | 4.95% | 3.58% | 4.44% | 4.00% | 4.44% | 9.59% | 8.52% | 9.00% | 2.61% | 4.59% | 4.66% |
| Free and reduced-price meal eligibility (percent) | 43.40% | 47.10% | 45.39% | 60.34% | 55.03% | 59.45% | 58.96% | 38.01% | 58.29% | 53.20% | 50.89% |

Note: Enrollment and demographic data for K-12 schoolchildren were sourced from the MI School Data website, which uses these categories for race and ethnicity. Data for nonpublic schools and RCCIs are not publicly available, so they are not included. MASA Regions 9 and 10 were combined.

The population of K-12 schoolchildren reached through 10 Cents grants can be described as follows:

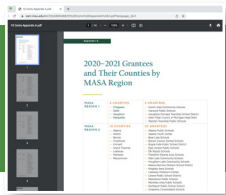
- The percentage of schoolchildren eligible for free and reduced-price meals in 10 Cents schools/districts was more than two percentage points higher than that of the schoolchildren in the state overall (53.20% compared to 50.89%).
- Overall, 10 Cents grantees served a higher percentage of African American (21.52%), Asian American (4.61%), and Hispanic/Latinx schoolchildren (9.03%) than the total percentages of the statewide population (17.72%, 3.53%, and 8.44%, respectively), and a lower percentage of White schoolchildren than the total state-level percentage (59.89% compared to 64.97%).
- Grantees in the MASA Regions 9 and 10 (Southeast Michigan, including the city of Detroit and Detroit Metropolitan area) served the highest percentage of African American schoolchildren (32.86%).
- Grantees in MASA Region 3 (West Michigan) served the highest percentage of Hispanic/Latinx schoolchildren (14.71%).
- Grantees in MASA Region 1 (Upper Peninsula) served the highest percentage of White schoolchildren (89.53%).
- Grantees in MASA Region 4 (Central Michigan) served the highest percentage of free and reduced-price meal eligible schoolchildren (60.34%).

2%

MORE CHILDREN

were eligible for free and reduced-price meals in 10 Cents schools/districts than in the state overall

The population of children served by 10 Cents grantees has increased significantly from prior years due to the inclusion of ECE sites and the program's statewide expansion, which now includes Wayne County and the city of Detroit (MASA Regions 9 and 10). When compared to the statewide population of schoolchildren, as a group 10 Cents grantees appear to serve a higher percentage of schoolchildren eligible for free and reduced-price meals and schoolchildren of color (African American, Asian American, and Hispanic/Latinx schoolchildren). As we look into the future, broadened program eligibility will allow many more grantees across Michigan to participate, setting the stage for more children to benefit from 10 Cents.



Click here to learn more about 2020-2021 Grantees and their counties by MASA Region.

Evaluation of 10 Cents is led by the Michigan State University Center for Regional Food Systems (CRFS). The work presented here is part of *10 Cents a Meal 2020-2021 Evaluation Results: Expanded Eligibility Increased Impacts* by Colleen Matts and Megan McManus of CRFS and was generously funded by the W.K. Kellogg Foundation and 10 Cents administrative funds for partner organizations.

To learn more, visit tencentsmichigan.org, foodsystems.msu.edu/10-cents-a-meal, and mifarmtoschool.msu.edu.

