

4-H EXPLORATION DAYS ACTIVITY GUIDE

JUNE 18–20, 2025
MICHIGAN 4-H YOUTH DEVELOPMENT
MSU EXTENSION
MICHIGAN STATE UNIVERSITY



EXPLORING NEW HORIZONS THROUGH 4-H
MICHIGAN 4-H EXPLORATION DAYS

This event is supported by funds from the Michigan 4-H Foundation.

CONTENTS & WELCOME

Contents

Schedule.....	1
Cool Things to See & Do at MSU During Free Time.....	2
Use the 4-H Exploration Days App.....	8
Finding Your Sessions	9
Shuttle Bus Schedule	9
MSU Campus Map.....	10
Campus Buildings & Features We Use Map Index.....	12
Campus Career Connect Track	13
A Sessions	13
B Sessions.....	14
C Sessions.....	16
D Sessions	16
General Information.....	18
Tell Us What You Think: Evaluate 4-H Exploration Days.....	20
Emergency Procedures	21



Welcome

Welcome to 4-H Exploration Days 2025, we're glad you're here! Have fun and learn as much as you can during the event. When you return home, apply what you've learned and share it with others. Please enjoy your stay and all that 4-H has to offer.



EXPLORING NEW HORIZONS THROUGH 4-H
MICHIGAN 4-H EXPLORATION DAYS

SCHEDULE

Look for the shuttle bus schedule on the “Finding Your Sessions” page.

WEDNESDAY, JUNE 18

7–8:15 a.m.

Breakfast for Tuesday Early Arrivals,
Akers Hall Cafeteria

8–9 a.m.

Chaperone Check-In, *West Holmes Hall Near Headquarters*

9–11 a.m.

Youth Check-In With County Chaperones, *East & West Holmes Hall Lobbies*

10:15 a.m.–Noon

Half-Hour County Meetings (*see signs on housing floors for county time & location*)

11:30 a.m.–1:30 p.m.

Lunch (**Green Group** starts at 11:30 a.m., **White Group** starts at 12:15 p.m.), *Akers Hall Cafeteria*

11:30 a.m.–1:30 p.m.

4-H State Awards Celebration (State 4-H Awards Nominees Only; Includes Lunch), *McDonel Hall, Rm. C107 Kiva*

2 p.m.

Gather for Campus Connect Career Track Sessions, *IM East Field (rain backup: IM Sports East, East Gym)*

2:30–4:30 p.m.

Campus Connect Career Track Sessions, *Various Locations*

5:30–6 p.m.

Youth–Chaperone Reflect & Plan Meetings (**White Group**), *On Assigned Floors*

5:30–7 p.m.

Dinner (**Green Group** starts at 5:30 p.m., **White Group** starts at 6 p.m.), *Akers Hall Cafeteria*

6:30–7 p.m.

Youth–Chaperone Reflect & Plan Meetings (**Green Group**), *On Assigned Floors*

7–9:45 p.m.

Free Time Activities: Ice Skating, Clover Olympics, Crafts & More (*Check Free Time Activities List for details*)

10 p.m.

Participants & Adults in Holmes Hall

10:15 p.m.

Holmes Hall Doors Locked

10:15–11 p.m.

Youth–Chaperone Debrief, *On Assigned Floors*

11 p.m.

Participants in Assigned Rooms

Midnight

Quiet in the Residence Hall

THURSDAY, JUNE 19

7–8:15 a.m.

Breakfast, *Akers Hall Cafeteria*

8:30–11:30 a.m.

A Sessions

8:30–11:30 a.m.

C Sessions

11:30 a.m.–1:30 p.m.

Lunch (**Green Group** 11:30 a.m.–12:15 p.m., **White Group** 12:15–1:30 p.m.), *Akers Hall Cafeteria*

1:30–4:30 p.m.

B Sessions

1:30–4:30 p.m.

C Sessions

5:30–6 p.m.

Youth–Chaperone Reflect & Plan Meetings (**White Group**), *On Assigned Floors*

SCHEDULE (continued)

5:30–7 p.m.

Dinner (**Green Group** starts at 5:30 p.m., **White Group** starts at 6 p.m.), *Akers Hall Cafeteria*

6:30–7 p.m.

Youth–Chaperone Reflect & Plan Meetings (**Green Group**), *On Assigned Floors*

7–9:45 p.m.

Free Time Activities: Dance, Ice Skating & More (*Check Free Time Activities lists for details*)

10 p.m.

Participants & Adults in Holmes Hall

10:15 p.m.

Holmes Hall Doors Locked

10:15–11 p.m.

Youth–Chaperone Debrief, *On Assigned Floors*

11 p.m.

Participants in Assigned Rooms

Midnight

Quiet in the Residence Hall

FRIDAY, JUNE 20

6:30–8:15 a.m.

Pack Up Housing Room

7–8:15 a.m.

Breakfast, *Akers Hall Cafeteria*

8:30–11 a.m.

D Sessions

11:30 a.m.–1 p.m.

Check-Out With Lead Chaperone

11:30 a.m.–1 p.m.

Lunch, *Akers Hall Cafeteria*

2 p.m.

Holmes Hall Doors Locked

COOL THINGS TO SEE & DO AT MSU DURING FREE TIME

You must wear your name badge for these activities!

WEDNESDAY FREE TIME ACTIVITIES

Clover Olympics

Wed.: 7–9:30 p.m.

IM East Field (rain backup: Akers Hall, Rm. C134)

Build your team! Accept the challenge! Join us for the Clover Olympics! Flex your mental and physical strength as you participate in timed relays to take home the Clover Trophy and other fun

prizes! You'll compete on four-person teams with members from one or more counties. Bring a team you've put together or be assigned to a team when you arrive for the games. Prizes will be awarded after each round of games. Don't miss out as we race to the finish line!

Free

Crafts & Games

Around the World

Wed.: 7–9 p.m.

Akers Hall, Rm. 139

Play and learn about games and make crafts associated with festivals and

celebrations around the world. You could play the summertime favorites cornhole, from the U.S., or pescaria, from Brazil. Make paper decorations to accompany Brazil's Festa Junina (June Harvest Festival) or perfume sachets to wear during the Chinese Dragon Boat Festival.

Free

Friendship Bracelets

Wed. & Thu.: 7–9:30 p.m.

Akers Hall, Rm. C135

Make a friendship bracelet with a length of cord, a few knots, and some colorful beads.

Free

Garden Bead Wands

Wed. & Thu.: 7–9:30 p.m.

Akers Hall, Rm. C134

Accent your indoor plant pots or outdoor garden with a delightful, decorative wand you'll make by stringing a variety of large, colorful beads onto a 20-inch metal rod with a glass or acrylic knob topper.

Free

Gardens

Wed.: 7–9:30 p.m.

& Thu.: 7–9:30 p.m.

Beal Botanical Garden

(be on the last shuttle bus by 9:30 p.m. on Wednesday & Thursday)

Horticulture Gardens

(home of the Michigan 4-H Children's Gardens)

Free

How Not to Die on a Farm

Wed. & Thu.: 7–9:30 p.m.

Akers Hall, Rm. C133

Drop in for a series of interactive demonstrations on staying safe while working on agriculture-related tasks.

Free

Mindful Minutes Room

Wed.: Open 8 a.m.–5 p.m.

Thu.: Open 8 a.m.–5 p.m.

West Holmes Hall, Rm. C113

Bamboo Room (next to the lounge)

If the excitement of 4-H Exploration Days starts to feel like it's a bit too much, visit the Mindful Minutes Room to ground yourself and relax. Take part in mindful activities such as meditation, yoga, journaling, and coloring, or just be quiet while collecting your thoughts. This room is not a session or an alternative to a session but a place to help you decompress and reset before the next activity. A staff member will be there to give instructions and offer support.

Free

Ice Skating

Wed. & Thu.: 7–9:30 p.m.

Munn Ice Arena

Free

Investing Wisely in Your 4-H Livestock Project

Wed. & Thu.: 7–9:30 p.m.

Holmes Hall, Rm. C101

Buying a 4-H project animal is a big decision and checking out the animals a breeder has for sale can raise a lot of questions, whether you're in your first or fifth year in the project. Join us to pick up tips that will help you decide which animal merits the investment of your time and money.

Free

Michigan 4-H Children's Gardens

Wed. & Thu.: 7–9:30 p.m.

The Michigan 4-H Children's Gardens are part of the MSU Horticulture Gardens. Kids and adults of all ages, from all around the world, have enjoyed the range of things to see and do in the many themed gardens!
Free

MSU Dairy Store

Anthony Hall, Rm. 1140

Wed. ONLY: 7:30–9 p.m. MSU Dairy Store Carts—Outside W. Holmes Hall

Wed.–Fri. Store Hrs: Noon–9 p.m.

Wed.–Thu. Observation Deck Hrs: 3:30–5 p.m. (follow signs from store entrance)

The MSU Dairy Store makes delicious ice cream just for you! Take a self-guided tour on the Anthony Hall observation deck with videos of how MSU makes cheese and ice cream. On Wednesday evening ONLY, the MSU Dairy Store Carts bring you ice cream just outside West Holmes Hall!

Pick up a Wednesday-only coupon from your chaperone for one free scoop from the Dairy Store Carts. The MSU Dairy Store is a cashless, card-only operation.

Pizza

Wed. & Thu.: 8:30–10 p.m.

Outside Holmes Hall

Cottage Inn Pizza will be outside Holmes Hall to sell:

- Six-slice medium pepperoni-and-cheese and cheese-only pizzas for \$6 each
- 12 pieces of garlic cheese bread for \$6 each

You can order other menu items from Cottage Inn Pizza (517-324-4300), Domino's Pizza (517-351-7100), or

other food vendors that offer on-campus delivery. If you don't have a phone, call in your order from the Holmes Hall front desk phone. The standard tip for pizza delivery is \$3 a pizza. Place orders by 9:30 p.m.

The Power of Story: Tips & Tricks for College Applications

Wed.: 7–9:30 p.m.

Akers Hall, Rm. C138

Build a story or vision board to share your 4-H experience and what it means to you. Your creation could become a useful tool when you're applying to colleges.

Free

Souvenir Shopping

Wed. & Thu.: 10 a.m.–5 p.m.

Spartan Bookstore, International Center; & Spartan Spirit Shop, MSU Union

Shop for Spartan-themed clothing and souvenirs.

Sparty's Convenience Store

Wed.: 10 a.m.–10 p.m.,

Thu.: 7 a.m.–10 p.m.,

& Fri.: 7 a.m.–1 p.m.

East McDonel Hall

Buy magazines, toothbrushes, and more.

Sports Facilities—Indoors

Wed.: 1–9:45 p.m.

& Thu.: 4:30–9:45 p.m.

IM Sports East—Open Recreation

- Racquetball
- Table tennis
- Basketball courts

Show your name badge and room key at the service counter to check out equipment.

Free

Sports Facilities—Outdoors

Wed.: 1–9:45 p.m.

& Thu.: 4:30–9:45 p.m.

IM East Field

- Sand volleyball courts
- Basketball courts
- Soccer

Show your name badge and room key to check out equipment from the IM Sports East service counter.

Free

Uno Card Tournament

Wed.: 7–9:30 p.m.

Holmes Hall, Rm. C104

Are you the best Uno card player in Michigan 4-H? Bring your friends and your best Uno skills to play 4-H'ers from across the state in an intense Uno battle.

Free

Wilderness Survival

& Foraging

Wed.: 7–8:30 p.m.

Meet in Front of East Holmes Hall (don't be late!)

Wander through MSU's campus and gardens with us and find out about the many flowers, berries, and leaves you can eat.

Free

Yard Games

& Sports Equipment

Wed.: 1–9:45 p.m.

& Thu.: 4:30–9:45 p.m.

Check out items at 4-H Exploration Days Headquarters in West Holmes Hall Lounge

Use your name badge to check out yard games and sports equipment:

- Soccer balls
- Volleyballs (nets across street at IM Sports East)

Free

THURSDAY FREE TIME ACTIVITIES

Crafts Around the World

Thu.: 7–9 p.m.

Akers Hall, Rm. C139

Join us for a quick, creative, six-continent crafting journey.

Free

Dance

Thu.: 7:30–9:30 p.m.

IM Sports East, East Gym

Free

Friendship Bracelets

Wed. & Thu.: 7–9:30 p.m.

Akers Hall, Rm. C135

Details in Wednesday free time entry.

Garden Bead Wands

Wed. & Thu.: 7–9:30 p.m.

Akers Hall, Rm. C134

Details in Wednesday free time entry.

Gardens

Wed. & Thu.: 7–9:30 p.m.

Beal Botanical Garden

Horticulture Gardens

Details in Wednesday free time entry.

How Not to Die on a Farm

Wed. & Thu.: 7–9:30 p.m.

Akers Hall, Rm. C133

Details in Wednesday free time entry.

Ice Skating

Thu.: 7–9:30 p.m.

Munn Ice Arena

Free

Inflatables

Thu.: 7:30–9:30 p.m.

IM Sports East, East Gym (West Side)

Join us for some bouncy, competitive fun on The Meltdown and The 40-Foot Backyard Obstacle Challenge.

Free

Investing Wisely in Your 4-H Livestock Project

Wed. & Thu.: 7–9:30 p.m.

Holmes Hall, Rm. C101

Details in Wednesday free time entry.

Juneteenth Celebration

Thu.: 7–9:30 p.m.

Akers Hall, Rm. 137 (Auditorium)

Juneteenth—a combination of June and 19th—is the annual celebration of an important moment in U.S. history: the effective ending of slavery. The day is a time to reflect on the fight for freedom, recognize the achievements of African Americans, and celebrate African American cultural heritage. Join us to help paint a mural and to watch or perform in an open mic event to celebrate all that Juneteenth has come to stand for.

Free

Michigan 4-H Children's Gardens

Wed. & Thu.: 7–9:30 p.m.

Details in Wednesday free time entry.

Movie: The Wild Robot

Thu.: 7 p.m.

Holmes Hall, Rm. C106 (Auditorium)

An intelligent robot called Roz is shipwrecked on an island. To survive, Roz bonds with the island's animals and cares for an orphaned baby goose.

Free

MSU Dairy Store

Anthony Hall, Rm. 1140

Wed.–Fri. Store Hrs: Noon–9 p.m.

Wed.–Thu. Observation Deck Hrs: 3:30–5 p.m. (follow signs from store entrance)

Details in Wednesday free time entry.

Pizza

Wed. & Thu.: 8:30–10 p.m.

Outside Holmes Hall

Details in Wednesday free time entry.

Poultry Quiz-Off & Crepes Competition

Thu.: 7–8 p.m.

Holmes Hall, Rm W9

Learn about 4-H poultry quiz competitions and practice your 4-H embryology project skills. You can also compete with your friends to see who creates the finest crepes.

Free

Rolling Video Games

Thu.: 7:30–9:30 p.m.

Between McDonel & Holmes Halls

One trailer, four high-def, widescreen TVs, a multitude of gaming systems, and your old and new favorite games add up to a video game blast! Race against your friends or play solo games. A game coach will be on hand to offer technical help and gaming advice.

Free

Souvenir Shopping

Wed. & Thu.: 10 a.m.–5 p.m.

Spartan Bookstore, International Center; & Spartan Spirit Shop, MSU Union

Details in Wednesday free time entry.

Sparty's Convenience Store

Wed. & Thu.: 7 a.m.–10 p.m.,

Fri.: 7 a.m.–1 p.m.

West Holmes Hall, Café Area

Details in Wednesday free time entry.

Sports Facilities—Indoors

Wed.: 1–9:45 p.m.

& Thu.: 4:30–9:45 p.m.

IM Sports East—Open Recreation

Details in Wednesday free time entry.

Sports Facilities—Outdoors

Wed.: 1–9:45 p.m.

& Thu.: 4:30–9:45 p.m.

IM East Field

Details in Wednesday free time entry.

What a Weird World: The Game Show!

Thu.: 7–9:30 p.m.

Akers Hall, Rm. C138

Earn points in individual and group versions of the game that tests your knowledge of the weird world we live in!

Free

Yard Games

& Sports Equipment

Wed.: 1–9:45 p.m.

& Thu.: 4:30–9:45 p.m.

Check out items at 4-H Exploration Days Headquarters in West Holmes Hall Lounge

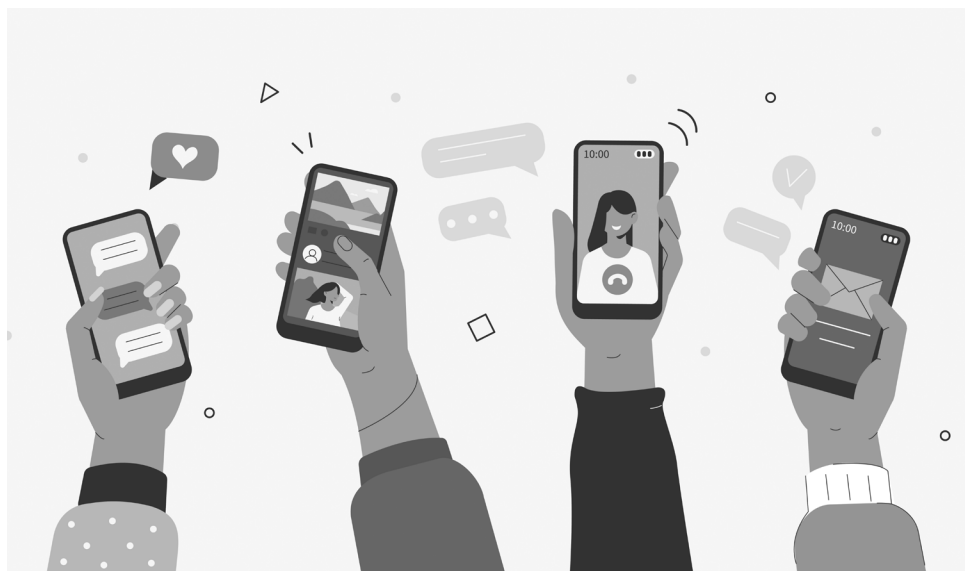
Details in Wednesday free time entry.

Summer 2025 Campus Road Construction Alert

Street and sidewalk closures due to road and building projects will shift often as work progresses. Please obey all construction banners and signs, mind all flaggers and patrol officers, and follow posted detours. For the latest on getting around campus, see the interactive Closures and Detours map at <https://apps.gis.msu.edu/construction/closures-and-detours/>.



USE THE 4-H EXPLORATION DAYS APP



If you have an internet-connected mobile device like a smartphone or tablet, you can replace your printed *2025 4-H Exploration Days Activity Guide* with the event app. The app works on Android and iOS devices.

1. Visit <https://my.yapp.us/4HEXPO> in your favorite web browser on your device and follow the instructions on the page, or scan the QR code that follows with your device's camera to open the link directly.



2. Install Yapp from the app store (if you don't have it already).

3. Open Yapp and tap "Download an existing Yapp" and the "MI 4-H Expo Days 2025" Yapp will appear.

You can also view most of the app's content from a web browser by clicking on the event graphic in the app's web page.

Finding Your Sessions

Using the Map and Index—The centerfold map and the “Campus Buildings and Features We Use Map Index” will help you get around. The map edges have lines of letters (left and right) and numbers (top and bottom) that create the index coordinates. For example, the index shows that Spartan Stadium is near **D-6** on the map. Find the letter D’s on the map’s sides, then the number 6’s on its top and bottom. Draw an imaginary line between the two letters and another one between the two numbers. You’ll find Spartan Stadium near where those imaginary lines cross on the map.

Use the interactive MSU map at <https://maps.msu.edu/interactive/> to navigate with a smartphone. For example, type “Holmes Hall” into the search box and that building will be highlighted on the map and its address given. You can then use the map’s wayfinding feature to guide you.

Field Trip Buses—If your session is going on a field trip, look for the field trip bus loading site on your map. It’s near **D-11** and marked with an **F** in a box. All field trips will leave from this location at the scheduled session starting time. Arrive at the field trip bus loading area 15 to 20 minutes before your session’s scheduled departure time, because once your bus leaves there’s no other way for you to get to your session.

Shuttle Buses—Please plan to walk to activities as much as possible. Limited shuttle bus service is provided by MSU buses labeled with bright green “4-H” signs. The centerfold map shows the shuttle route. Shuttle buses stop at the places marked on the map with circled numbers. These are the only places where you can get on and off shuttle buses.

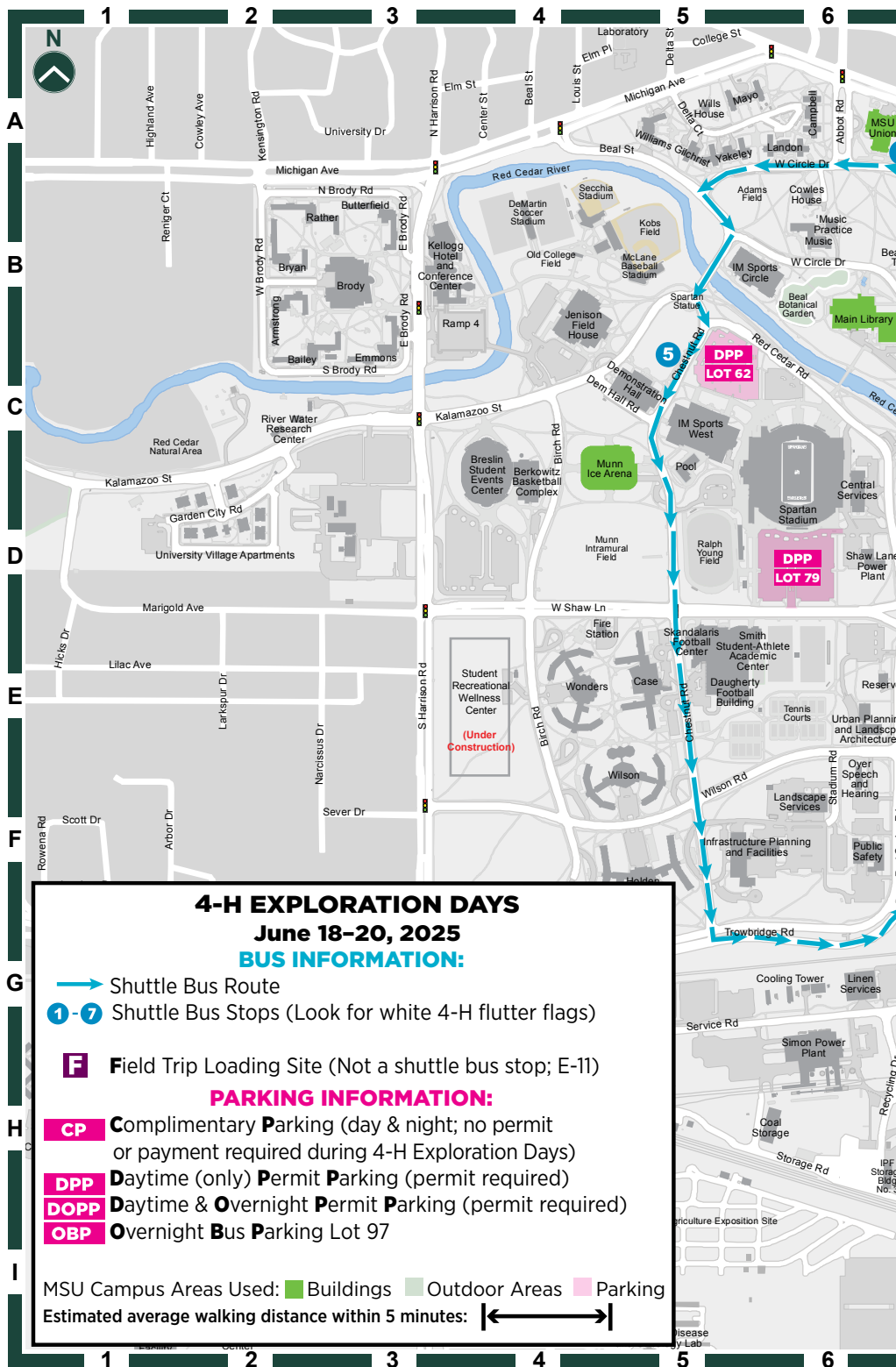
Remember: Look for bus designations and window signs that refer to 4-H, and only board 4-H buses.

Shuttle Bus Schedule

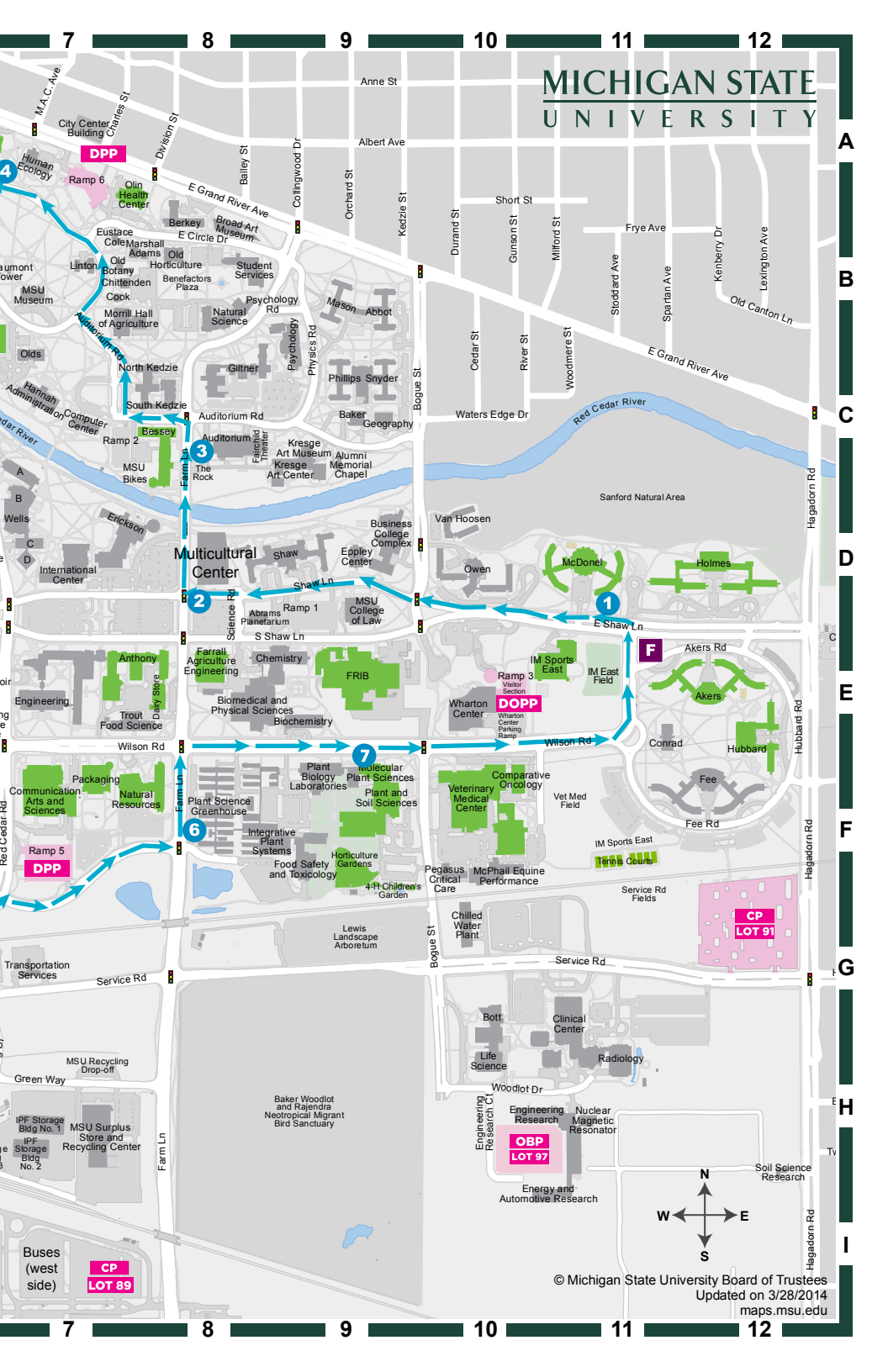
Wednesday:
4 to 9:30 p.m.

Thursday:
7:45 to 9 a.m.
11 a.m. to 1:45 p.m.
4 to 9:30 p.m.

Friday:
7:45 to 9 a.m.
10:45 a.m. to noon



© Michigan State University Board of Trustees
Updated on 3/28/2014
maps.msu.edu



Campus Buildings & Features

We Use Map Index

Use this index to find your destinations on the centerfold map. (See the “Finding Your Sessions” section for directions on using the map and index to navigate campus.)

E-11 Akers Hall	D-7 International Center (Spartan Bookstore)
E-8 Anthony Hall	C-7 Main Library
C-6 Beal Botanical Garden	D-10 McDonel Hall
D-8 Bessey Hall	G-9 Michigan 4-H Children's Gardens
D-8 Bikes Service Center, MSU (Bessey Hall)	C-8 MSU Bikes Service Center
F-7 Communication Arts & Sciences	B-7 MSU Union
E-8 Dairy Store, MSU (Anthony Hall)	D-5 Munn Ice Arena
E-9 Facility for Rare Isotope Beams (FRIB)	F-8 Natural Resources
E-8 Farrall Agricultural Engineering	B-8 Olin Health Center
E-11 Field Trip Loading Site	F-7 Packaging
D-11 Holmes Hall	F-9 Plant & Soil Sciences
F-9 Horticulture Gardens (Michigan 4-H Children's Gardens)	D-7 Spartan Bookstore (International Center)
F-11 Hubbard Hall	B-7 Spartan Spirit Shop (MSU Union)
E-10 IM East Field	B-7 Union, MSU
E-10 IM Sports East	F-10 Veterinary Medical Center
E-10 IM Sports East, Tennis Courts	D-7 Wells Hall

Donate to the Michigan 4-H Foundation!

Your donation to the Michigan 4-H Foundation prepares 4-H'ers to lead, serve, build . . . and conquer life's challenges!

What your donation can do:

- Support 4-H learning experiences.
- Support your local 4-H program.
- Support the Michigan 4-H Children's Gardens.
- Honor someone special to you with a memorial or tribute gift.
- Support a thriving 4-H program in Michigan.

Your gift can help 4-H GROW today! Donate at www.mi4hfdtn.org or use the QR code.



MICS 2751

CAMPUS CAREER CONNECT TRACK

Meet Wednesday, June 18, 2:30–11:30 a.m.

Gather with your C3T session leader at 2 p.m. on the IM East Field (rain backup: IM Sports East, East Gym). From there you'll walk or ride a bus to your session.

A SESSIONS

**Meet Thursday, June 19,
8:30–11:30 a.m.**

- A-1 Acting Improv**
Holmes Hall, Rm. C104
- A-3 American Sign Language for Beginners**
Holmes Hall, Rm. C103
- A-4 Artistic Wooden Blossoms**
Plant & Soil Sciences, Rm. B109
- A-5 Beat the Clock: 4-H Escape Room**
Akers Hall, Rm. C133
- A-6 Chill Out With Tech: Mindfulness for the Modern Teen**
Holmes Hall, Rm. W5
- A-7 Clicking for Success**
Hubbard Hall, Rm. 128
- A-8 Coding & Raspberry Pi**
Anthony Hall, Rm. 1257
- A-9 Consumer Conversations & Media Training: Talking With Fair & Event Visitors**
Wells Hall, Rm. A130
- A-10 Create Your Own TV Show**
Communication Arts & Sciences, Rm. 134 Studio E
- A-11 Creativity Through Self-Expression**
Holmes Hall, Rm. W9
- A-13 Ecological Engineering & Rain Gardens**
Farrall Agricultural Engineering, Lab 131
- A-14 The Egg to Chick Journey: Incubation Science**
Anthony Hall, Rm. 1260
- A-15 Exploring Horticulture at MSU**
Plant & Soil Sciences, Rm. B102
- A-17 Jelly Roll Drag Race**
Holmes Hall, Rm. C101
- A-18 Juneteenth: Freedom & Legacy**
Wells Hall, Rm. A122
- A-19 Meat Evaluation for Beginners**
Anthony Hall, Rm. 1300
Demonstration Lab
- A-20 Mindful Painting**
Plant & Soil Sciences, Rm. A182
- A-21 Mindfulness With the Majestics**
Field Trip (Pavilion, Indoor Arena North End)
- A-22 Mixing Magic: Crafting Natural Plant Syrups for Mixology & Cultivating a Garden of Flavor**
Field Trip (Martin Luther Chapel, East Lansing)
- A-23 Outdoor Environmental Education**
McDonel Hall, Rm. C107
Kiva

A-24 Packaging Science

Packaging, Rm. 101

A-25 Poultry in an Eggshell

Field Trip (Pavilion, Classroom D)

A-26 Preserving With Jams & Salsa

McDonel Hall, Rm. 45A

Community Kitchen (basement)

**A-27 Rabbit Showmanship
for Beginners**

Field Trip (Pavilion, Classroom C)

A-28 Rugby for Rookies

IM East Field (rain backup: IM

Sports East, Rear Gym)

A-29 Savvy Animal Science

Akers Hall, Rm. C138

A-30 Sewing for Beginners

Holmes Hall, Rm. C102

**A-31 Slam Dunk Your Way
to Better Basketball Skills**

IM Sports East, East Gym

A-32 Spartan Dollars & Sense:**A Budgeting Challenge**

Hubbard Hall, Rm. G30

A-33 Target Archery

Field Trip (Pavilion, South Barn)

**A-34 Tour de MSU—Biking
Around MSU**

Bessey Hall, Rm. B10, MSU Bikes

Service Center (rain backup:

Bessey Hall, Rm. 105)

A-35 Veterinary Nurse for a Day

Veterinary Medical Center, E100

(Lobby; enter west corner E100

entrance from corner of Bogue

St and Wilson Rd)

A-36 Vinyl Creations

Akers Hall, Rm. C135

A-37 Cow Eye Dissection

Veterinary Medical Center,

Rm. G205 (Meet in G Lobby)

B SESSIONS

Meet Thursday, June 19,

1:30–4:30 p.m.

B-1 Acting Improv

Holmes Hall, Rm. C104

B-2 Amazing Racing

Plant & Soil Sciences, Rm. A149

**B-3 American Sign Language:
The Next Level**

Holmes Hall, Rm. C103

B-4 Beat the Competition

Field Trip (Beef Cattle Teaching
& Research Center)

**B-5 Breaking the Ice—Inclusive
Activities for Everyone**

Holmes Hall, Rm. E182 East

Lounge

B-6 Cheese Making:**Mozzarella Science**

McDonel Hall, Rm. 45A

Community Kitchen (basement)

B-7 Coding & Raspberry Pi

Anthony Hall, Rm. 1257

**B-8 Corsage & Boutonniere
Making**

Plant & Soil Sciences, Rm. B109

B-9 Create Your Own TV Show

Communication Arts & Sciences,
Rm. 134 Studio E

B-12 Fabric Boxes

Holmes Hall, Rm. C102

B-13 Food for Thought

Akers Hall, Rm. C134

- B-14 Fostering Healthy & Happy Relationships**
Akers Hall, Rm. C139
- B-15 I Am Awesome**
Holmes Hall, Rm. W5
- B-16 Jelly Roll Drag Race**
Holmes Hall, Rm. C101
- B-18 Laser Cutting**
Akers Hall, Rm. C135
- B-19 Meat Evaluation for Beginners**
Anthony Hall, Rm. 1300
Demonstration Lab
- B-20 Mindful Moshing: Dance, Discover & Reflect**
IM Sports East, Multipurpose Room
- B-21 Mixing Magic: Crafting Natural Plant Syrups for Mixology & Cultivating a Garden of Flavor**
Field Trip (Martin Luther Chapel, East Lansing)
- B-22 Nothing Up My Sleeve! Magic & Illusions**
Plant & Soil Sciences, Rm. A159
- B-23 Orange, Blue, Green, Gold—Which Are You?**
Holmes Hall, Rm. W9
- B-24 Play Like an Athlete, Eat Like an Athlete**
McDonel Hall, Rm. B42
- B-25 Poultry in an Eggshell**
Field Trip (Pavilion, Classroom D)
- B-26 Quilled Wall Hangings**
Anthony Hall, Rm. 1260
- B-27 Rabbit Showmanship for Advanced Exhibitors**
Field Trip (Pavilion, Classroom C)
- B-28 Rabbits: A 4-H Project & Beyond**
Hubbard Hall, Rm. G29
- B-30 Savvy Animal Science**
Akers Hall, Rm. C138
- B-31 Slam Dunk Your Way to Better Basketball Skills**
IM Sports East, East Gym
- B-32 Spartan Dollars & Sense: A Budgeting Challenge**
Hubbard Hall, Rm. G30
- B-33 Target Archery**
Field Trip (Pavilion, South Barn)
- B-34 Tour de MSU—Biking Around MSU**
Bessey Hall, Rm. B10, MSU Bikes Service Center (rain backup: Bessey Hall, Rm. 105)
- B-35 Turning Vegetables Into Power**
Field Trip (Anaerobic Digestion Research & Education Center)
- B-36 Unlock the Power of Languages**
Wells Hall, Rm. A122
- B-37 Vibrant Vibes**
Plant & Soil Sciences, Rm. A166
- B-38 Youth Take the Stage: An Introduction to Interactive Theater**
Akers Hall, Rm. 137 (Auditorium)

C SESSIONS

**Meet Thursday, June 19,
8:30–11:30 a.m. & 1:30–4:30 p.m.**

C-1 Build Your Own Fishing Rod
Natural Resources, Rm. 152

**C-3 Early Childhood Education:
Keeping Kids Engaged
& Having Fun**
Wells Hall, Rm. A124 (afternoon
field trip to MSU Child
Development Center)

C-4 Everything Equine
Field Trip (Horse Teaching
& Research Center)

C-5 Finding Fun in Your Family Tree
Main Library, Rm. W221 Red
Cedar West (ask for directions
at Circulation Desk on first floor)

**C-6 Pellet Rifle & Air Pistol Target
Shooting Fundamentals**
Field Trip (Michigan Trap
Association, Mason)

C-8 Ready! Set! Pull!
Field Trip (Michigan Trap
Association, Mason)

D SESSIONS

Meet Friday, June 20, 8:30–11 a.m.

D-1 Amazing Racing
Plant & Soil Sciences, Rm. A149

D-2 Clicking for Success
Hubbard Hall, Rm. 128

D-3 Create Your Own TV Show
Communication Arts & Sciences,
Rm. 134 Studio E

D-4 Cultivating Confidence
Anthony Hall, Rm. 1260

**D-5 Dairy Cattle 201: Management
Practices for the Modern Farmer**
Field Trip (Dairy Teaching
& Research Center)

**D-6 A Drone's Eye View of
Michigan Agriculture**
Field Trip (Agronomy Farm,
Rm. 132)

**D-7 Ecological Engineering
& Rain Gardens**
Farrall Agricultural Engineering,
Lab 131

D-8 Fabric Boxes
Holmes Hall, Rm. C102

**D-9 Fantasy Writing: Characters,
Monsters & More!**
Hubbard Hall, Rm. G28

D-10 Farm Livin' Is the Life for Me!
Holmes Hall, Rm. W9

D-12 Forestry 101
Natural Resources, Rm. 1

**D-14 Go Green @ MSU Recycling
Center**
Field Trip (MSU Recycling
Educational Center)

- D-15 Handbell & Hand Chime Ringing for Beginners**
Akers Hall, Rm. C139
- D-16 I'm Putting WHAT in My Body?!**
Holmes Hall, Rm. C104
- D-17 Kickball 101**
IM East Field (rain backup: IM Sports East, East Gym)
- D-18 Let's Go to College**
Wells Hall, Rm. A122
- D-19 Make Your Own Pajama Pants**
Holmes Hall, Rm. C101
- D-20 Orchids 101**
Plant & Soil Sciences, Rm. A159
- D-21 Pellet Rifle for Beginners**
Field Trip (University Farms)
- D-22 Personal Leadership Journey**
McDonel Hall, Rm. C107 Kiva
- D-23 Pickleball 101: Learn the Game**
IM Sports East, Tennis Courts (rain backup: IM Sports East, Rear Gym)
- D-24 Rabbit Color Genetics**
Field Trip (Pavilion, Classroom C)
- D-25 Rabbits: A 4-H Project & Beyond**
Hubbard Hall, Rm. G29
- D-26 Reality Farm**
Hubbard Hall, Rm. G30
- D-27 Rugby for Rookies**
IM East Field (rain backup: IM Sports East, Rear Gym)
- D-28 Savvy Animal Science**
Akers Hall, Rm. C138
- D-29 Soap Making**
McDonel Hall, Rm. 45A
Community Kitchen (basement)
- D-30 Stop-Motion Animation Challenge**
Hubbard Hall, Rm. G31
- D-31 Super Collisions of Atomic Nuclei**
Facility for Rare Isotope Beams, Lobby (Enter NW corner of building from S. Shaw Lane, next to Chemistry Building)
- D-32 Take on Your Financial Future**
McDonel Hall, Rm. B42
- D-33 Technology Tools to Make Outdoors Fun**
Holmes Hall, Rm. C103
- D-34 Venture to Adventure: Careers in Nature**
Holmes Hall, Rm. C106 (Auditorium)
- D-35 Veterinary Nurse for a Day**
Veterinary Medical Center, E100 (Lobby; enter west corner E100 entrance from corner of Bogue St and Wilson Rd)
- D-36 Working With Search & Rescue K9's**
Field Trip (Pavilion, Auditorium)

GENERAL INFORMATION

PLEASE READ CAREFULLY

1. Staying in a Residence Hall—

When you check in at Holmes Hall, you'll receive a room key and a conference card that serves as your meal card and lets you enter your housing floor stairwell and elevators. Linens will be in your room. Blankets are available in your closet or on request. Lock your room each time you leave and keep your key and conference card with you at all times.

2. Youth—Chaperone Assignments & Whereabouts Schedules—

All youth participants must be assigned to a specific adult chaperone. You must attend all sessions for which you are registered, and your attendance will be monitored. During free time, youth participants and the assigned adult chaperone need to keep each other informed of where they will be, when, and with whom. All chaperones will create a system to ensure all parties know where everyone is. (The system could be using whereabouts schedules, group texting, or another method.)

3. Youth—Chaperone Meetings—

In addition to the county meeting you'll have shortly after arriving at 4-H Exploration Days, you'll have four youth-chaperone meetings throughout the event. These mandatory meetings will give you a chance to check in with your chaperone after sessions, before and after evening activities, and before bedtime. While counties may adjust the times of the meetings slightly, the official times are:

- Wednesday: 10:15 a.m.–noon, 5:30–7 p.m., & 10:15–11 p.m. (You must stay on your floor after the final meeting.)
- Thursday: 5–7 p.m. & 10:15–11 p.m. (You must stay on your floor after the final meeting.)

4. Helpers—Session and activity helpers will provide extra support and help as needed. You can identify the helpers by their green 4-H vests.

5. Name Badges—You must wear your lanyard and name badge at all times during the conference. Your name badge will admit you to campus activities and identify you as a participant in 4-H Exploration Days.

6. Bed Check—Your lead chaperone will do a bed check each night. You must be in your assigned room no later than 11 p.m. and must sleep in your assigned room. Under no circumstances may you move without first obtaining permission from your lead chaperone or county staff member. Keep the blinds closed when the lights are on in your room in the evening.

7. 4-H Exploration Days Information Center—

This office is in W179 Holmes Hall (phone number will be posted in Holmes Hall and on the Yapp app). The center is open from 7 a.m. to midnight.

8. Headquarters—4-H Exploration Days Headquarters is in the West Holmes Hall Lounge (phone 517-432-7611). Headquarters is staffed from 7 a.m. to midnight on Wednesday and Thursday and from 7 a.m. to 2:30 p.m. on Friday. If you

need help during the night, contact the West Holmes desk receptionist (phone 517-353-6360), who will connect you with the 4-H Exploration Days leadership team.

9. Nurse's Station—The Nurse's Station is in apartment E183 Holmes Hall (phone number will be posted in Holmes Hall and on the Yapp app). The Nurse's Station is staffed from 9 a.m. on Wednesday until 1:30 p.m. on Friday. If you get sick or hurt, tell your lead chaperone and county staff, then report to the nurse. If you need more care you will be taken to:

- **Olin Health Center**—for those aged 14 and up only (8 a.m. to 5 p.m.).
- **Area medical facility**—The nurse, 4-H Information Center, and 4-H Exploration Days Headquarters in the West Holmes Hall Lounge have contact information and maps.

Victims of life-threatening situations will be taken directly to U of M Sparrow Hospital in Lansing. Phone 911 for an ambulance, then notify your county 4-H staff, lead or assigned

chaperone, and 4-H Exploration Days Headquarters in the West Holmes Hall Lounge (517-432-7611). Emergency transportation is always available from Headquarters.

You or your parents or guardian will be billed for the cost of hospital treatment.

10. Cafeteria—Everyone will eat in the Akers Hall Cafeteria. Please enter from the West Akers side. The facility is accessible to people with disabilities.

11. Phone Calls—There are no land lines in the housing rooms and no pay phones in Holmes Hall.

12. Check-Out Procedures

& Times—Check-out is from 11 a.m. to 1:30 p.m. on Friday. All rooms are to be vacated by 1:30 p.m.

- Lock your door when leaving the room.
- Place your sheets and towels in the designated bins by the elevator on your floor.
- Collect any trash from your room and place it in the county trash bag by the elevator on your floor.
- Turn in your key and conference card to your lead chaperone. You'll be billed \$75 for a missing key and \$20 for a missing card.
- If you need to wait for a ride, check out and wait in the lobby area of Holmes Hall. The hall will be closed and locked at 2 p.m.

13. Conduct Policy Reminder—You agreed to abide by a code of conduct when you enrolled in 4-H, and to abide by the event rules when you registered. Both the code of conduct and the event rules are available in 4-H Exploration Days Headquarters in the West Holmes Hall Lounge. Several key points follow: Theft, vandalism, the use of alcohol and illegal drugs,

I can't wait for . . .



**2026 4-H
EXPLORATION
DAYS!**

June 24 to 26, 2026
See you there!



and leaving the premises (except for session field trips) are not permitted. Bullying, name calling, or comments about race, gender, sexuality, or political beliefs will not be tolerated. Violators will immediately be sent home at their own expense and may

not be allowed to attend future 4-H Exploration Days. Those engaged in illegal activities will be turned over to the proper authorities. Repair costs for property damage will be billed to the group or individual responsible for it.

TELL US WHAT YOU THINK: EVALUATE 4-H EXPLORATION DAYS

After your last session on Friday, we invite you to take a moment to complete the 2025 4-H Exploration Days online evaluation. We will use your feedback to improve the event next year. Your answers will be anonymous.

The survey will be open **until 5 p.m. on June 30, 2025**. You can reach the

survey by clicking on the link (<https://msu.co1.qualtrics.com/jfe/form/SVdiKwk6NIPCZcmA6>), typing the address into your browser, or using this QR code:



Emergency Procedures

If you spot a FIRE:

Set off an alarm. Call 911 and report the location of the fire. Leave the building calmly and quietly. Do not use the elevator. (Conference assistants will direct the evacuation.) Once you reach a safe place, notify 4-H Exploration Days Headquarters at 517-432-7611.

(NOTE: The silver decals on the back of your housing room door give more information on fire procedures.)

If there is a SEVERE THUNDERSTORM or TORNADO WARNING:

In a weather emergency, a steady signal of varying volume means TAKE COVER NOW! Move to an interior hallway (in the basement or on the ground level is best) with no windows or other hazards, or to the lowest level of a parking ramp. Stay under cover until the “all clear” signal is given by the MSU Alert System or the Yapp app. If you are in a session when you hear this warning, stay together, find shelter, and wait for the all clear signal.

If there is another EMERGENCY:

In another type of emergency (accident, illness, suspicious activity, or threat of violence), call 911 immediately. If you are told to secure in place:

- Lock the doors of the room you are in. (The main doors of the building will also be locked.)
- Close the blinds or curtains and turn off the lights.
- Hide in a protected area. Build a barricade with or hide behind objects in the room.
- Stay under cover until the all clear signal is given by the MSU Alert System or the Yapp app.

MICHIGAN STATE
UNIVERSITY

Extension

Michigan State University Extension programs and materials are open to all without regard to race, color, national origin, gender, gender identity, religion, age, height, weight, disability, political beliefs, sexual orientation, marital status, family status, or veteran status. Issued in furtherance of MSU Extension work, acts of May 8 and June 30, 1914, in cooperation with the U.S. Department of Agriculture. Quentin Tyler, Director, MSU Extension, East Lansing, MI 48824. This information is for educational purposes only. Reference to commercial products or trade names does not imply endorsement by MSU Extension or bias against those not mentioned. The 4-H name and emblem have special protections from Congress, protected by Title 18 U.S.C. 707. Produced for MSU Extension (www.extension.msu.edu) by the MSU Extension Educational Materials Team.

1P-1,050-06:2025-PRINT/WEB-BP-RM/LG WCAG 2.0 AA



EXPLORING NEW HORIZONS THROUGH 4-H

MICHIGAN 4-H EXPLORATION DAYS

Michigan 4-H Youth Development programs involve volunteers in providing positive, experiential, educational opportunities for and with youth. Our mission is to create environments, through collaboration, that build strong, healthy youth who are proactive in a complex and changing world.

MICHIGAN STATE
UNIVERSITY | Extension

Michigan 4-H Youth Development | MSU Extension | Michigan State University